

A Redwood Secret

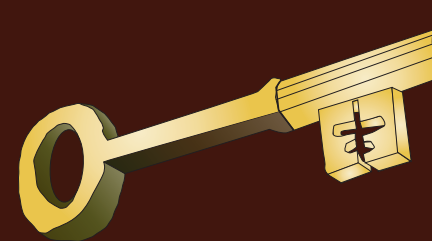
Unlocking History

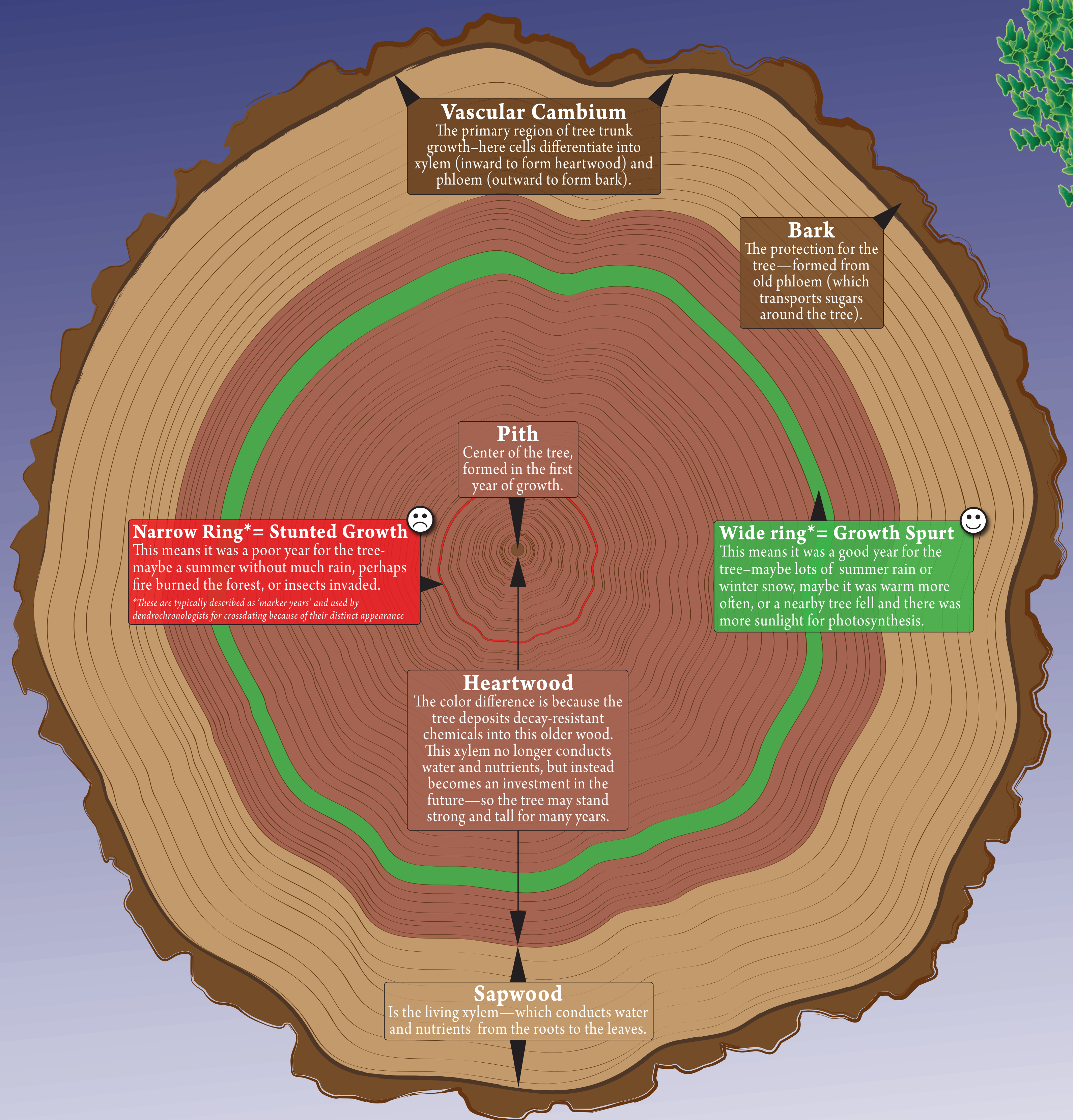
Dendrochronology

dendron = tree
chronos = time
ology = science of (dĕn'drō-krə-nŏl'ə-jē)

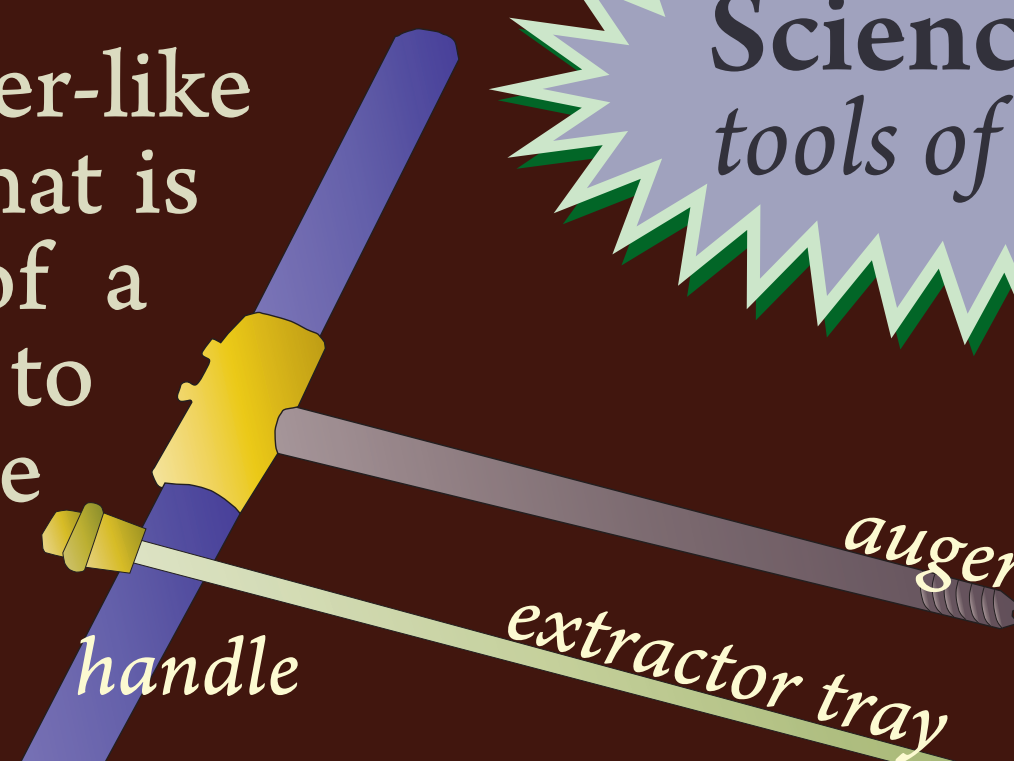
a method of scientific dating based on the analysis of tree ring patterns

Tree Ring: Key to the past

 A layer of wood cells produced by a tree or shrub in one year

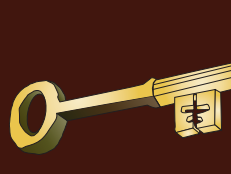
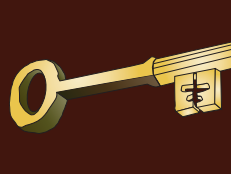
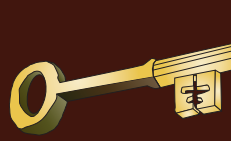


increment borer: Is an auger-like tool with a hollow shaft that is twisted into the trunk of a tree. This allows scientists to extract an increment core (or tree core) with which they can crossdate trees with minimal injury.



Science Focus
tools of the trade

What can we learn from tree ring data?

-  What past climates were like (hot, dry, wet, cold)
-  When fires occurred (based on burn scars)
-  Forest disturbances (insect infestations or major storms)

With this information, scientists are recreating a tree's growth history over time—thus estimating the age of these ancient beings!

Crossdating

An Example

